

CONSOLIDATED PRICE LIST

Low -Voltage Circuit Breakers





ITEM ORDERING BASED ON COLOR:
 Terasaki Electric (M) Sdn. Bhd.

 Terasaki Electric Trading & Services(M) Sdn. Bhd.

2017 PRICE LIST

CONTENTS	Pg.
TemBreak2 - Standard Series MCCB	1
TemBreak2 - Adjustable Thermal MCCB	2
TemBreak2 - Circuit Breaker with Residual Current (CBR)	3
TemBreak2 - Earth Leakage Breakers (ELB)	4
TemBreak2 - Motor Circuit Protection Breakers	5
TemBreak2 - Standard Series Electronic Adj MCCB	6
TemBreak2 - Standard Series Electronic Adj type - With LCD Type OCR MCCB	7
TemBreak2 - High Fault Series Electronic Adj 125KA MCCB	8
TemBreak2 - MCCB Accessories	9
TemBreak2 - Rotary Handle (HB)(HP) with Key	10
TemBreak2 - Mechanical Interlock for 2 nos MCCBs	11
TemBreak2 - Handle Lock (HL)	12
TemBreak2 - Interpole Barrier (BA)	13
TemBreak2 - Terminal Cover for Front Connection MCCB (CF)	14
TemBreak2 - Attached Bar (FB)	15
TemBreak2 - Auto Changeover MCCB/MCCB	16
TemPower2 - AR Series Air Circuit Breaker	17
TemPower2 - AR Type ACB Accessories (1)	18
TemPower2 - AR Type ACB Accessories (2)	19
TB - Series Miniature Circuit Breaker	20
TECS - DIN Modular 6KA B Curve MCB	21
TECS - DIN Modular 10KA B Curve MCB	22
TECS - DIN Modular 6KA C Curve MCB	23
TECS - DIN Modular 10KA C Curve MCB	24
TECS - DIN Modular 6KA D Curve MCB	25
TECS - DIN Modular 10KA D Curve MCB	26
TECS - DIN Modular 10KA (80A,100A,125A) B,C,D Curve MCB	27
TECS - 2 Pole Residual Current Circuit Breaker	28
TECS - 4 Pole Residual Current Circuit Breaker	29
TECS EP series - RCBO	30
TECS - DIN Modular Isolator Switch	31
RTR - POWER CAPACITORS 440Vac	32
RTR - POWER CAPACITORS 525Vac	33
DETUNED REACTOR	34
TZS - Earth Leakage Relay (TZS AD ELR)	35

This price list supersedes all previous price list.

Note: Prices based on excluding GST effective From 1st March 2017 And Subject To Change Without Prior Notice.

TemBreak2 - Standard Series MCCB

MODEL	Current Rating (A) Calibrated at 40	BREAKING CAPACITY (Icu/Ics) AC415V KA	Connection	List price (RM)		
				2 Pole	3 Pole	4 Pole
E100SF	10A,15A,20A,30A,40A,50A,60A	10KA / 5KA	FC	225.00	236.00	N/A
E100SF	75A,100A	10KA / 5KA	FC	241.00	286.00	N/A
E160SF	15A,20A,30A,40A,50A,60A ,75A,100A	16KA / 8KA	FC	266.00	316.00	N/A
E160SF	125A c/w attached bar	16KA / 8KA	FC	289.00	338.00	N/A
S160SCF	15A,20A,30A,40A,50A,60A ,75A,100A	25KA / 13KA	FC	295.00	395.00	592.00
S160SCF	125A c/w attached bar	25KA / 13KA	FC	318.00	418.00	627.00
S160SF	15A,20A,30A,40A,50A,60A ,75A,100A	40KA / 20KA	FC	354.00	506.00	770.00
S160SF	125A c/w attached bar	40KA / 20KA	FC	381.00	531.00	815.00
S100NF	15A,20A,30A,40A,50A,60A ,75A,100A	30KA / 30KA	FC	377.00	488.00	737.00
S125NF	125A	30KA / 30KA	FC	414.00	514.00	774.00
S100GF	15A,20A,30A,40A,50A,60A ,75A,100A	65KA / 33KA	FC	479.00	594.00	985.00
S125GF	125A	65KA / 33KA	FC	525.00	740.00	1,126.00
S125RF	15A,20A,30A,40A,50A,60A ,75A,100A	65KA / 65KA	FC	N/A	701.00	1,198.00
E250SF	125,150A,175A,200A,225A,250A	25KA / 19KA	FC	N/A	715.00	1,073.00
S250SF	125,150A,175A,200A,225A,250A	40KA / 20KA	FC	N/A	817.00	1,461.00
S225NF	150A,175A,200A,225A	35KA / 35KA	FC	N/A	783.00	1,504.00
S250NF	250A	35KA / 35KA	FC	N/A	905.00	1,538.00
S225GF	150A,175A,200A,225A	65KA / 33KA	FC	N/A	989.00	1,529.00
S250GF	250A	65KA / 33KA	FC	N/A	1,237.00	1,607.00
S225RF	125,150A,175A,200A,225A	65KA / 65KA	FC	N/A	1,044.00	1,642.00
S400CF	300A, 400A	36KA / 36KA	FC	N/A	1,693.00	3,135.00
S400NF	300A, 400A	50KA / 50KA	FC	N/A	1,822.00	3,597.00
S400GF	300A, 400A	70KA / 50KA	FC	N/A	1,912.00	3,854.00
S400PF	300A, 400A	85KA / 85KA	FC	N/A	3,183.00	4,795.00
S800NF	500A,630A	50KA / 50KA	FC	N/A	3,323.00	7,117.00
S800RF	500A,630A	70KA / 50KA	FC	N/A	3,988.00	7,859.00
S800NF	700A,800A	50KA / 50KA	FC	N/A	4,131.00	7,952.00
S800RF	700A,800A	70KA / 50KA	FC	N/A	4,956.00	8,476.00
S1000NE	1000A	70KA / 50KA	FC	N/A	6,186.00	11,402.00
S1250NE	1250A	70KA / 50KA	FC	N/A	7,517.00	12,753.00
S1600NE	1600A	85KA / 65KA	FC	N/A	11,416.00	20,877.00

Note :- Model Name End With :-

F :- Fixed thermal type

E :- Adjustable electronic Type

ORDER TO:



Terasaki Electric (M) Sdn. Bhd.



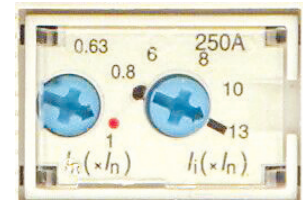
Terasaki Electric Trading & Services(M) Sdn. Bhd.

TemBreak2 - Adjustable Thermal MCCB

MODEL	Current Rating (A) Calibrated at 40°C	BREAKING CAPACITY (Icu/Ics) AC415V KA	Connection	List price (RM)	
				3 Pole	4 Pole
S125NJ	20A,32A,50A,63A,100A,125A	36KA / 30KA	FC	553.00	835.00
S160NJ	20A,32A,50A,63A,100A,125A,160A	36KA / 36KA	FC	913.00	1,662.00
S250NJ	160A,200A	36KA / 30KA	FC	846.00	1,661.00
S250NJ	250A	36KA / 30KA	FC	978.00	1,662.00
S125GJ	20A,32A,50A,63A,100A,125A	65KA / 33KA	FC	799.00	1,216.00
S125RJ	20A,32A,50A,63A,100A,125A	65KA / 65KA	FC	930.00	1,611.00
S250GJ	160A,200A	65KA / 33KA	FC	1,069.00	1,652.00
S250GJ	250A	65KA / 33KA	FC	1,336.00	1,735.00
S250RJ	250A	65KA / 65KA	FC	1,470.00	2,041.00
H125NJ	20A,32A,50A,63A,100A,125A	125KA / 85KA	FC	1,588.00	1,985.00
H250NJ	160A,250A	125KA / 85KA	FC	1,906.00	2,381.00
S400CJ	250A, 400A	36KA / 36KA	FC	1,827.00	3,385.00
S400NJ	250A, 400A	50KA / 50KA	FC	1,967.00	3,885.00
S400GJ	250A, 400A	70KA / 50KA	FC	2,065.00	4,162.00
S400PJ	250A, 400A	85KA / 85KA	FC	4,761.00	6,189.00
S800NJ	630A	50KA / 50KA	FC	3,988.00	8,541.00
S800NJ	800A	50KA / 50KA	FC	4,956.00	9,233.00
S800RJ	630A	70KA / 50KA	FC	7,374.00	9,533.00
S800RJ	800A	70KA / 50KA	FC	8,852.00	10,550.00

Thermal Adjustment Dials : I_R can be set between 0.63 and 1.0 times I_n . (Standard setting is 1)

: I_i is the magnetic element adjustment dial.



- In the event of stock unavailability, it will take approximately 6 weeks ex-warehouse

Terasaki Electric Malaysia.

TemBreak2 - Circuit Breaker with Residual Current (CBR)

MODEL	Current Rating (A) Calibrated at 40°C	BREAKING CAPACITY (Icu/Ics) AC415V KA	Connection	LIST PRICE (RM)	
				3 Pole	4 Pole
ZE 125-NJ	20A, 32A, 50A, 63A, 100A, 125A	25KA/19KA	FC	3,455.00	3,945.00
ZS 125-NJ	20A, 32A, 50A, 63A, 100A, 125A	36KA/36KA	FC	3,597.00	4,026.00
ZS 125-GJ	20A, 32A, 50A, 63A, 100A, 125A	65KA/36KA	FC	3,847.00	4,299.00
ZE 250-NJ	160A, 250A	25KA/19KA	FC	3,668.00	4,383.00
ZS 250-NJ	160A, 250A	36KA/36KA	FC	3,824.00	4,561.00
ZS 250-GJ	160A, 250A	65KA/36KA	FC	4,086.00	4,883.00

ORDER TO:

Terasaki Electric (M) Sdn. Bhd.

Terasaki Electric Trading & Services(M) Sdn. Bhd.



- Overcurrent trip mechanism : Adjustable thermal-magnetic.
- Right side pocket area occupied by earth leakage circuitry.
- Shunts and UVT's cannot be installed.
- Delivery: Indent basis (6 - 8 weeks upon order confirmation)



TemBreak2 - Earth Leakage Breakers (ELB)

MODEL	Current Rating (A) Calibrated at 40 °C	BREAKING CAPACITY (Icu/lcs) AC415V KA	Connection	LIST PRICE (RM)	
				3 Pole	4 Pole
ZS 50-NF	10A, 15A, 20A, 30A, 40A, 50A	10KA	FC	729.00	N/A
ZE 100-NF	50A, 60A, 75A, 100A	10KA	FC	831.00	N/A
ZS 100-NF	15A,20A,30A,40A,50A,60A,75A,100A	30KA	FC	2,159.00	2,350.00
ZS 125-NF	125A	30KA	FC	2,528.00	3,122.00
ZS 100-GF	15A,20A,30A,40A,50A,60A,75A,100A	65KA	FC	2,906.00	3,637.00
ZS 125-GF	125A	65KA	FC	3,343.00	3,814.00
ZE 225-NF	125A, 150A, 175A, 200A, 225A	15KA	FC	2,731.00	N/A
ZE 250-NF	250A	15KA	FC	2,868.00	N/A
ZS 225-NF	125A, 150A, 175A, 200A, 225A	35KA	FC	3,085.00	3,904.00
ZS 250-NF	250A	35KA	FC	3,385.00	4,101.00
ZS 225-GF	125A, 150A, 175A, 200A, 225A	65KA	FC	3,820.00	5,792.00
ZS 250-GF	250A	65KA	FC	4,014.00	6,421.00
ZE 400-NF	250A, 300A, 350A, 400A	25KA	FC	3,350.00	N/A
ZS 400-NF	250A, 300A, 350A, 400A	50KA	FC	4,137.00	5,378.00
ZS 400-GF	250A, 300A, 350A, 400A	65KA	FC	4,758.00	6,453.00
ZS 630-CF	500A, 600A, 630A	36KA	FC	9,052.00	N/A
ZS 630-NF	500A, 600A, 630A	50KA	FC	9,190.00	N/A
ZS 800-CF	700A, 800A	36KA	FC	11,166.00	N/A
ZS 800-NF	700A, 800A	50KA	FC	12,397.00	N/A

- Overcurrent trip mechanism : Fixed thermal-magnetic.
- Right side pocket area occupied by earth leakage circuitry.
- Shunts and UVT's cannot be installed.

Note 1) : Available on type **Hi** = Fixed on 30mA only.

and type **Mi** = Adjustable between 100mA , 200mA & 500mA.

Note 2) : ELCB - Based on JIS C 8201-2-2 standard. Breaking Cap : Icu

- Delivery: Indent basis (6 - 8 weeks upon order confirmation)



TemBreak2 - Motor Circuit Protection Breakers

MODEL	Current Rating (A) Calibrated at 40 °C	BREAKING CAPACITY (Icu/Ics) AC415V KA	Connection	LIST PRICE (RM)
				3 Pole
E30-NM	1.4A, 2.6A, 4A, 8A, 10A, 16A, 24A, 32A	1.5KA / 1KA	FC	291.00
S30-NM	0.7A, 1.4A, 2A, 2.6A, 4A, 5A, 8A, 10A, 12A, 16A, 24A, 32A	2.5KA / 2KA	FC	313.00
XM30PB	0.7A, 1.4A, 2A, 2.6A, 4A, 5A, 8A, 10A, 12A	85KA / 85KA	FC	1,330.00
E50-NM	24A, 32A, 40A, 45A	2.5KA / 2KA	FC	406.00
S50-NM	10A, 12A, 16A, 24A, 32A, 40A, 45A	10KA / 5KA	FC	452.00
E100-NM	60A, 75A, 90A	10KA / 5KA	FC	473.00
S100-NM	16A, 24A, 32A, 40A, 45A, 60A, 75A, 90A, 100A	30KA / 30KA	FC	634.00
S225-NM	125A, 150A, 175A, 225A	35KA / 35KA	FC	1,019.00

Overcurrent trip mechanism : Fixed thermal-magnetic

TemBreak2 - Motor Circuit with Earth Leakage Protection Breakers

ZS100-NM	16A, 24A, 32A, 40A, 45A, 60A, 75A, 90A, 100A	30KA	FC	2,588.00
ZS225-NM	125A, 150A, 175A, 225A	35KA	FC	3,702.00

Overcurrent trip mechanism : Fixed thermal-magnetic

Adjustable residual current tripping : type **Hi** = Fixed 30mA,

and type **Mi** = Adjustable between 100mA , 200mA & 500mA.

- Delivery: Indent basis (6 - 8 weeks upon order confirmation)

TemBreak2 - Standard Series Electronic Adj type (With Standard type built-in OCR: L.S.I)

Terasaki Electric Trading & Services(M) Sdn. Bhd.

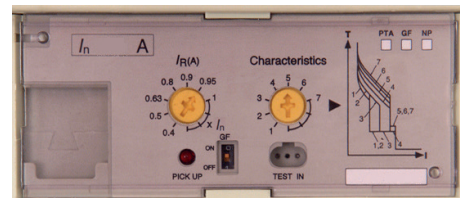
MODEL	Current Rating (A) Calibrated at 40 °C	BREAKING CAPACITY (Icu/lcs) AC415V KA	Connection	LIST PRICE (RM)	
				3 Pole	4 Pole
S250-NE	125,160A,250A	36KA / 36KA	FC	3,323.00	4,514.00
S250-GE	125,160A,250A	65KA / 36KA	FC	4,309.00	5,557.00
S250-PE	125,160A,250A	70KA / 70KA	FC	4,649.00	6,237.00
S400-NE	250A,400A	50KA / 50KA	FC	4,309.00	5,273.00
S400-GE	250A,400A	70KA / 50KA	FC	5,103.00	6,350.00
S400-PE	250A,400A	85KA / 85KA	FC	5,783.00	7,258.00
S630-CE	630A	50KA / 50KA	FC	4,876.00	7,484.00
S630-GE	630A	70KA / 50KA	FC	5,557.00	8,278.00
S800-NE	630A	50KA / 50KA	FC	5,897.00	8,618.00
S800-RE	630A	70KA / 50KA	FC	6,782.00	9,242.00
S800-NE	800A	50KA / 50KA	FC	6,124.00	8,732.00
S800-RE	800A	70KA / 50KA	FC	7,258.00	9,582.00
S1250-GE	1250A	85KA / 65KA	FC	9,771.00	15,309.00



Terasaki Electric (M) Sdn. Bhd.

Adjustment Dials : IR (A) setting at 0.4, 0.5, 0.63, .0.8, 0.9, 0.95 & 1.0

- 5 preset characteristics on 250A model
- 7 preset characteristics on 400A model
- 6 preset characteristics on 630A model
- 7 preset characteristics on 800A model
- 6 preset characteristics on 1000A model
- 7 preset characteristics on 1250A & 1600A model



- Delivery: Indent basis (6 - 8 weeks upon order confirmation)

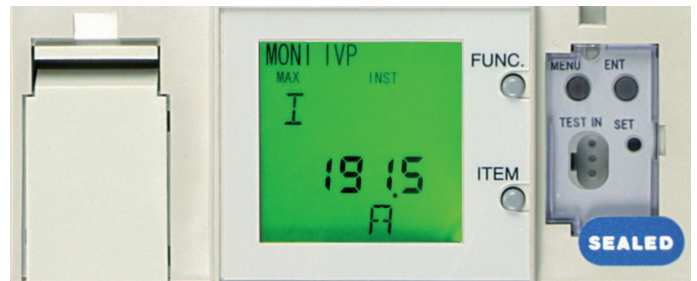

ORDER TO:

TemBreak2 - Standard Series Electronic Adj type (with LCD)

OCR type: XOW-1L-AGN (without Communication function)

MODEL	Current Rating (A) Calibrated at 40 °C	BREAKING CAPACITY (Icu/Ics) AC415V KA	Connection	LIST PRICE (RM)	
				3 Pole	4 Pole
S400-NE	250A,400A	50KA / 50KA	FC	5,500.00	7,462.00
S400-GE	250A,400A	70KA / 50KA	FC	6,045.00	8,086.00
S400-PE	250A,400A	85KA / 85KA	FC	6,725.00	8,642.00
S630-CE	630A	50KA / 50KA	FC	6,567.00	9,005.00
S630-GE	630A	70KA / 50KA	FC	7,111.00	9,424.00
S800-NE	630A	50KA / 50KA	FC	9,957.00	11,624.00
S800-RE	630A	70KA / 50KA	FC	10,479.00	12,701.00
S800-NE	800A	50KA / 50KA	FC	10,716.00	11,737.00
S800-RE	800A	70KA / 50KA	FC	11,453.00	14,288.00
S1000-NE	1000A	70KA / 50KA	FC	13,438.00	15,649.00

- Delivery: Indent basis (6 - 8 weeks upon order confirmation)



ORDER TO:



Terasaki Electric (M) Sdn. Bhd.



Terasaki Electric Trading & Services(M) Sdn. Bhd.

TemBreak2 - High Fault Series Electronic Adj type (With Standard type built-in OCR: L.S.I)

Terasaki Electric Trading & Services(M) Sdn. Bhd.



Terasaki Electric (M) Sdn. Bhd.


ORDER TO:

MODEL	Current Rating (A) Calibrated at 40 °C	BREAKING CAPACITY (Icu/Ics) AC415V KA	Connection	LIST PRICE (RM)	
				3 Pole	4 Pole
H250-NE	125,160A,250A	125KA / 85KA	FC	5,794.00	7,242.00
H400-NE	250A,400A	125KA / 85KA	FC	9,058.00	9,918.00
H800-NE	630A	125KA / 94KA	FC	12,257.00	15,657.00
H800-NE	800A	125KA / 94KA	FC	13,037.00	18,480.00
TL-1000NE	900A,1000A	125KA / 65KA	FC	14,300.00	19,594.00
TL-1200NE	1200A	125KA / 65KA	FC	15,729.00	20,752.00

Adjustment Dials : IR (A) setting at 0.4, 0.5, 0.63, .0.8, 0.9, 0.95 & 1.0

5 preset characteristics on 250A model

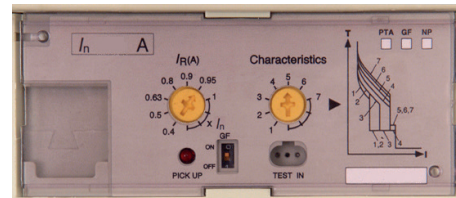
7 preset characteristics on 400A model

6 preset characteristics on 630A model

7 preset characteristics on 800A model

6 preset characteristics on 1000A model

7 preset characteristics on 1250A & 1600A model



- Delivery: Indent basis (6 - 8 weeks upon order confirmation)

TemBreak2 - MCCB Accessories

MODEL	Shunt Trip Coil (SHT) 240Vac	Undervoltage Trip Coil (UVT) 415Vac	Auxiliary Switch 1c (On/Off Status)	Alarm Switch 1c (Trip Status)	Breaker Mounted Handle (Reset Open)	Door Mounted Handle (Reset Open) T2HP type	MOTOR 240Vac
E100SF	(for 10A) 2H1927BBBK RM166.00	2H1941BABK + UXUB0018AK RM166.00	UXXB0001AK RM94.00	UXLB0006AK RM100.00	(for 2 pole) TFJ21XHU2-2P RM173.00	XFHA1V-TM or T1HP10XR5BNAPS4A	XMB1(240V)
	(for 15A - 100A) 2H1929BBAK RM166.00		(AUX & ALM combined sw) UXLB0008CK RM193.00		(for 3 pole) TFJ21XHU2 RM173.00	RM232.00	RM2,334.00
E160SF /S160SCF S160SF	T2SH00LA20WB RM166.00	T2UV00LA40NWB RM180.00	T2AX00LML3SWA RM100.00	for 2P T2AL00LMR3SWA	T2HB16LUR3BA RM182.00	T2HP16LR5BTAPS4A RM232.00	N/A
E250SF /S250SF				for 3P T2AL00LML3SWA	T2HB25LUR3BA RM187.00	T2HP25LR5BNAPS4A RM241.00	T2MC25LA24AA RM2,334.00
S100NF / S125NF S100GF / S125GF S125NJ / S125GJ	T2SH00A20WA RM254.00	T2UV00A40NWA RM375.00	T2AX00M3SWA RM100.00	T2AL00M3SWA RM100.00	T2HB12UR3BNA RM187.00	T2HP12R5BNAPS4A RM241.00	T2MC12A24AB RM2,334.00
S225NF/GF/RF/NE S250GF/GE/PE S125RF/RJ S250NJ / S250GJ H125NJ / H250NJ H250NE					T2HB25UR3BNA RM187.00	T2HP25R5BNCPS4A RM241.00	T2MC25A24AB RM2,334.00
S400CF/S400NF S400GF/ S400PF E400NJ /S400CJ S400NJ /S400GJ S630CE / H400NE					T2HB40UR3BNB/A RM305.00	T2HP40R5BNBPS4A RM434.00	T2MC40A10AB RM5,122.00
S800NF / S800RF S800NJ / S800NE H800NE / S1000NE					T2HB80UR3BNA RM395.00	T2HP80R5BNAPS4A RM526.00	T2MC80A10AA RM5,122.00
S1250NE / S1600NE	T2HBX6UR3BNA RM565.00	T2HPX6R6BNAPS4A RM586.00	T2MCX6A24NA RM5,716.00				
TL1000NE/TL1200NE	2H1198BADK RM613.00	2H1208BABK + UXUB0018AK RM772.00	UXXB0010AK RM400.00	UXLB0011AK RM559.00	TFJ 38X RM1,044.00	XFH A49 RM1,003.00	2H1195CABK RM12,191.00
(AUX & ALM combined sw) UXLB0017DK RM958.00							

Breaker Mounted type Rotary Handle			Door Mounted type Rotary Handle
T2HB_LU(IP30)	T2HB_U(IP30)	T2HBX6UR3BNA(IP30)	T2HP(IP54)
			

- Note:
- 1)T2HB & T2HP rotary handle for all 2 pole models are not available.
 - 2)TFJ21XHU2-2P - For E 100-SF 2 pole MCCB / TFJ21XHU2 - For E 100-SF 3 pole MCCB.
 - 3)T2HB...F3 (Off Position To Open Door) & T2HP...F5 (Off Position To Open Door), available on request.

MCCB Accessories

TemBreak2 - Rotary Handle (HB)(HP) with Key

MODEL	BREAKER MOUNTED HANDLE (HB) WITH KEY	DOOR MOUNTED HANDLE (HP) WITH KEY	LIST PRICE (RM)
E100-SF	N/A	T1HP10XR5BKAPS4A	510.00
E160-SF / S160-SCF S160-SF	N/A	T2HP16LR5BKAPS4A	533.00
E250-SF / S250-SF	N/A	T2HP25LR5BKAPS4A	533.00
S100NF / S125-NF S100-GF / S125-GF S125-NJ / S125-GJ	T2HB12UR5BKA	T2HP12R5BKCPS4A	533.00
S225NF / S250NF S225GF / S250GF S125RF / S225RF S250NJ / S250GJ H125NJ / H250NJ	T2HB25UR5BKA	T2HP25R5BKCPS4A	533.00
S400-CF / S400-NF S400-GF / S400-PF S630-CE	T2HB40UR5BKA	T2HP40R5BKAPS4A	794.00
S800-NF / S800-RF S1000NE	T2HB80UR5BKA	T2HP80R5BKAPS404	1,361.00
S1250-NE / S1600-NE	T2HBX6UR5BKA	T2HPX6R5BKAPS404	1,814.00

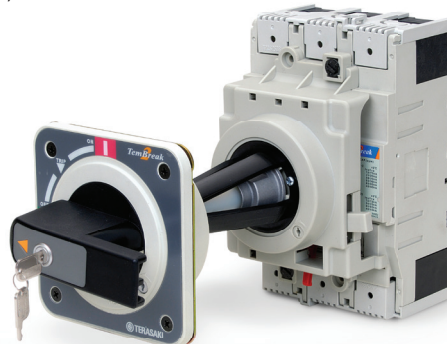
Terasaki Electric Trading & Services(M) Sdn. Bhd.



Terasaki Electric (M) Sdn. Bhd.


ORDER TO:

- Delivery: Indent basis (6 - 8 weeks upon order confirmation)



MCCB Accessories

TemBreak2 - Mechanical Interlock for 2 nos MCCBs

MODEL	Mech Interlock Slide type		Mech Interlock Wire type c/w 1m length cable	
	3 Pole	4 Pole	Mech parts (1 set)	1 meter length cable
E100-SF	UXKB005B RM 284.00	N/A	N/A	N/A
E160-SF / S160-SCF S160-SF	T2MS16L3SF RM 500.00	T2MS16L4SF RM 624.00	N/A	N/A
E250-SF / S250-SF	T2MS25L3SF RM 500.00	T2MS25L4SF RM 624.00	N/A	N/A
S100NF / S125-NF S100-GF / S125-GF S125-NJ / S125-GJ	T2MS123SFA RM 500.00	T2MS124SFA RM 624.00	T2MW12CA RM 397.00	T2MW00SA RM 340.00
S225NF / S250NF S225GF / S250GF S125RF / S225RF S250NJ / S250GJ H125NJ / H250NJ	T2MS253LFA RM 500.00	T2MS254LFA RM 624.00	T2MW25CA RM 397.00	T2MW00SA RM 340.00
S400-CF / S400-NF S400-GF / S400-PF S630-CE	T2MS403SFA RM 1,124.00	T2MS404SFA RM 1,372.00	T2MW40CB RM 2,041.00	T2MW00SA RM 340.00
S800-NF / S800-RF S1000NE	T2MS803SFA RM 1,247.00	T2MS804SFA RM 1,588.00	T2MW80CA RM 3,402.00	T2MW00L RM 340.00
S1250-NE / S1600-NE	T2MSX63SFA RM 1,588.00	T2MSX64SFA RM 1,928.00	T2MWX6CA RM 3,969.00	T2MW00L RM 340.00 <i>(factory fit item)</i>

- Delivery: Indent basis (6 - 8 weeks upon order confirmation)

ORDER TO:


Terasaki Electric (M) Sdn. Bhd.



Terasaki Electric Trading & Services(M) Sdn. Bhd.

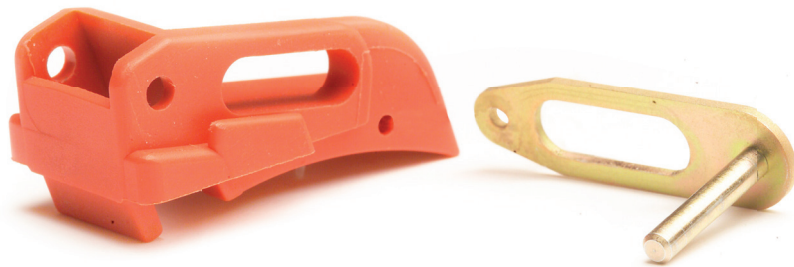
MCCB Accessories

TemBreak2 - Handle Lock (HL)

APPLICABLE MODEL	ORDER CODE	LIST PRICE (RM)
E100SF **	UXKH0009AK, UXKE0030AK	85.00
E160SF, S160SCF, S160SF, E250SF, S250SF	T2HL25LA	109.00
S100NF/GF, S125NF/GF/RF/NJ/GJ/RJ	T2HL25B	149.00
S225NF/GF/RF, S250NJ/GJ, S160NJ	T2HL25B	149.00
S400CF/NF/CJ/NJ/PF, S630CE	T2HL40A	168.00
S800NF/NJ/RF, S1000NE	T2HL40A	168.00
S1250NE, S1600NE	T2HLX6A	203.00

Note: E100SF ** - a hole must be drilled in the breaker toggle. Please state "with toggle lock (HL)" when ordering.

- Delivery: Indent basis (6 - 8 weeks upon order confirmation)



MCCB Accessories

TemBreak2 - Interpole Barrier (BA)

APPLICABLE MODEL	POLE	ORDER CODE	LIST PRICE (RM)
E100SF	3	TQQ-3CC	12.00
E160SF, S160SCF, S160SF	3	T2BA16L3SHA	12.00
E250-SF, S250-SF	3	T2BA25L3SH	28.00
S100NF, S100GF, S125NF, S125NJ, S125GF, S125GJ	3	T2BA403SHA	23.00
S225NF, S225GF, S225RF, S250NF, S250NJ, S250GF, S250GJ, S250RJ, S125RF, S125RJ, H100NF, H125NF, S125NJ, H225NF, H250NF, H250NJ, S250NE	3	T2BA123SHA	28.00
S400CF/NF/CJ/NJ/PF, S630CE, H400NE S800NF/NJ/RF, S1000NE, H800NE S1250NE, S1600NE	3	T2BA253SHA	35.00

ORDER TO:

Terasaki Electric (M) Sdn. Bhd.

Terasaki Electric Trading & Services(M) Sdn. Bhd.


Note : 1) Line side interpole barriers or terminal cover must be installed with MCCBs.
 2) Interpole Barriers are supplied 2 barriers per pack.

- Delivery: Indent basis (6 - 8 weeks upon order confirmation)

MCCB Accessories

TemBreak2 - Terminal Cover for Front Connection MCCB (CF)

Terasaki Electric Trading & Services(M) Sdn. Bhd.



Terasaki Electric (M) Sdn. Bhd.


ORDER TO:

APPLICABLE MODEL	ORDER CODE 2 POLE	LIST PRICE (RM)	ORDER CODE 3 POLE	LIST PRICE (RM)	ORDER CODE 4 POLE	LIST PRICE (RM)
E100SF	2H1402DAB	23.00	2H1403DAB	28.00	N/A	-
E160SF, S160SCF, S160SF	*T2CF16L2SLHGA	20.00	*T2CF16L3SLHGA	27.00	*T2CF16L4SLHGA	35.00
E250SF, S250SF	N/A	-	T2CF25L3SLNG	76.00	T2CF25L4SLNG	99.00
S100NF,S100GF,S125NF, S125NJ,S125GF, S125GJ	T2CF122SLNC	66.00	T2CF123SLNGA	70.00	T2CF124SLNGA	95.00
S225NF,S225GF, S250NF/NJ,S250GF/GJ	N/A	-	T2CF253SLNGA	78.00	T2CF254SLNG	105.00
S125RF,S125RJ,S225RF, S250RJ,H100NF, H125NF, H125NJ,H250NE	N/A	-	T2CF253LLNG	88.00	T2CF254LLNG	117.00
S400CF,S400NF,S400CJ, S400NJ,S400PF,H400NE, S630CE	N/A	-	T2CF403SWNG	174.00	T2CF404SWNG	287.00
S800NF,S800NJ,S800RF, H800NE,S1000NE	N/A	-	T2CF803SLNG	313.00	T2CF804SLNG	457.00
S1250NE	N/A	-	T2CFX33SLNG	473.00	T2CFX34SLNG	658.00

Note: Terminal Cover are supplied 2 covers per pack.

Note: *T2CF16L2SLHGA, T2CF16L3SLHGA & T2CF16L4SLHGA are supplied 1 cover per pack.

MODEL	LIST PRICE (RM)
Locking clip for S400, S630CE (T2F00L) tool	28.00
Locking clip for S800, S1000 (T2CF00LA) tool	28.00



- Delivery: Indent basis (6 - 8 weeks upon order confirmation)

MCCB Accessories

TemBreak2 - Attached Bar (FB)

APPLICABLE MODEL	BAR TYPE	POLE	ORDER CODE	LIST PRICE (RM)
E160-SF, S160-SCF, S160-SF	spread	3	T2FB16L3WHB	48.00
		4	T2FB16L4WHB	64.00
E250-SF, S250-SF	spread	3	T2FB25L3WHA	76.00
		4	T2FB25L4WHA	94.00
H125-NJ , H250-NJ	spread	3	T2FB253BA	125.00

Note: Attached Bars are supplied 3 bars perpack (3P) and 4 bars per pack (4P).



ORDER TO:

Terasaki Electric (M) Sdn. Bhd.

Terasaki Electric Trading & Services(M) Sdn. Bhd.

TemBreak2 - Auto Changeover MCCB



- 2 nos 4P MCCB FC
- 2 nos MOTOR OPERATOR (AUTO RESET TYPE) + 1 pc LEAD WIRE (600MM)
- 2 nos UNDER VOLTAGE TRIP (UVT)
- 2 nos AUX SWITCH
- 2 nos ALM SWITCH
- 1 set MECHANICAL INTERLOCK WIRE TYPE (1 METER)

MODEL	CURRENT RATING Calibrated at 40°C	Breaking Capacity (Icu/Ics) AC415V KA	POLE	CONNECTION	LIST PRICE (RM)
S100-NF	15A ~ 100A	30KA	4 POLE	FC	8,229.00
S125-NF	125A	30KA	4 POLE	FC	8,303.00
S100-GF	15A ~ 100A	65KA	4 POLE	FC	8,725.00
S125-GF	125A	65KA	4 POLE	FC	9,007.00
S225-NF	150A ~ 225A	35KA	4 POLE	FC	9,763.00
S250-NF	250A	35KA	4 POLE	FC	9,831.00
S225-GF	150A ~ 225A	65KA	4 POLE	FC	9,813.00
S250-GF	250A	65KA	4 POLE	FC	9,969.00
S400-CF	300A ~ 400A	36KA	4 POLE	FC	20,245.00
S400-NF	300A ~ 400A	50KA	4 POLE	FC	21,169.00
S800-NF	500A ~ 630A	50KA	4 POLE	FC	29,570.00
S800-NF	700A ~ 800A	50KA	4 POLE	FC	31,240.00
S1000-NE	1000A	70KA	4 POLE	FC	38,140.00
S1250-NE	1250A	70KA	4 POLE	FC	42,597.00
S1600-NE	1600A	85KA	4 POLE	FC	58,845.00

- Delivery: Indent basis (6 - 8 weeks upon order confirmation)



TemPower2 - AR Series Air Circuit Breaker

MODEL	Rated Current (A)	Breaking Capacity Ics = 100% of Icu (KA)	Main Circuit Terminal (Standard)	Drawout Type		Fixed Type	
				3 Pole List Price (RM)	4 Pole List Price (RM)	3 Pole List Price (RM)	4 Pole List Price (RM)
STANDARD SERIES							
AR208S	800A	65KA	Horizontal	11,287.00	13,430.00	POR	11,287.00
AR212S	1250A	65KA	Horizontal	12,994.00	15,790.00	POR	12,703.00
AR216S	1600A	65KA	Horizontal	13,960.00	16,859.00	POR	13,551.00
AR220S	2000A	65KA	Vertical	18,995.00	22,778.00	POR	18,621.00
AR325S	2500A	85KA	Vertical	23,636.00	27,550.00	POR	23,636.00
AR332S	3200A	85KA	Vertical	29,786.00	34,843.00	POR	29,786.00
AR440SB	4000A	100KA	Vertical	35,980.00	40,427.00	N/A	N/A
AR440S	4000A	100KA	Vertical	46,773.00	52,556.00	N/A	N/A
AR650S	5000A	120KA	Vertical	95,413.00	123,382.00	N/A	N/A
AR663S	6300A	120KA	Vertical	114,387.00	151,299.00	N/A	N/A
HIGH FAULT SERIES						<i>POR: Price On Request</i>	
AR212H	1250A	80KA	Vertical	14,207.00	17,282.00	POR	POR
AR216H	1600A	80KA	Vertical	15,267.00	18,456.00	POR	POR
AR220H	2000A	80KA	Vertical	20,807.00	24,967.00	POR	POR
AR316H	1600A	100KA	Vertical	16,333.00	19,387.00	POR	POR
AR320H	2000A	100KA	Vertical	22,223.00	26,194.00	POR	POR
AR325H	2500A	100KA	Vertical	27,653.00	31,682.00	POR	POR
AR332H	3200A	100KA	Vertical	34,850.00	40,070.00	POR	POR

Above standard spec ACB completed with :-

- 1) SHUNT TRIP 240VAC
- 2) AUX SW 4A4B
- 3) POSITION PADLOCK
- 4) ON-OFF BUTTON TRANSPARENT COVER
- 5) CONTROL CIRCUIT TERMINAL TRANSPARENT COVER
- 6) DOOR FLANGE IP31

JKR SPECIFICATIONS ACB completed with :- AGR-11BL-AL, Main Circuit Safety Shutter & Interpole Barrier.

Note : N/A : Not Available

Fixed type 3 & 4 Pole : In the event of stock unavailability, it take approximately 6 weeks ex-warehouse Terasaki Electric Malaysia.

High Fault Series : Indent basis.

All accessories ordered separately will incur charges. (Charges will be waived if installation done at Terasaki)

ORDER TO:



Terasaki Electric (M) Sdn. Bhd.



Terasaki Electric Trading & Services(M) Sdn. Bhd.

TemPower2 - AR Type ACB Accessories (1)

Terasaki Electric Trading & Services(M) Sdn. Bhd.



Terasaki Electric (M) Sdn. Bhd.


ORDER TO:

Accessories	Type	AR208S ~ AR220S	AR325S ~ AR332S AR440SB	AR650S ~ AR630S	AR208S ~ AR220S	AR325S ~ AR332S AR440SB	AR650S ~ AR630S
		3 Pole			4 Pole		
Over Current Release (OCR) with CTs							
Type : AGR-11BL-AL		2,620.00	2,858.00	3,097.00	2,620.00	2,858.00	3,097.00
Type : AGR-11BL-GL *With Ground Fault Trip		N/A	N/A	N/A	5,001.00	6,192.00	7,621.00
Type : AGR-21BL-PS		5,954.00	7,371.00	9,072.00	5,954.00	7,371.00	9,072.00
Type : AGR-21BL-PG *With Ground Fault Trip		N/A	N/A	N/A	6,430.00	7,961.00	9,799.00
Type : AGR-31BL-PS		11,179.00	13,404.00	15,725.00	11,179.00	13,404.00	15,725.00
Type : AGR-31BL-PG *With Ground Fault Trip		N/A	N/A	N/A	12,856.00	15,415.00	18,084.00
Type : AGR-21BS-PS (for Generator protection)		7,734.00	9,277.00	10,886.00	7,734.00	9,277.00	10,886.00
Interpole Barriers		2,031.00	2,087.00	2,211.00	2,053.00	2,144.00	2,314.00
Main Circuit Safety Shutter*		1,073.00	1,443.00	1,894.00	1,415.00	1,844.00	2,400.00
Control Circuit Terminal Safety Shutter		431.00					

Note: * Available on Drawout type only.

All accessories order separately will incur charges. (Charges will be waived if installation done at Terasaki factory)

TemPower2 - AR Type ACB Accessories (2)

Accessories	Type	FOR ALL AR SERIES 3P & 4P ACB (RM)
Shunt Trip (Opening Coil) 240Vac		737.00
Motor Operator AC240Vac with Closing coil 240Vac		3,237.00
Closing Coil 240Vac		737.00
U.V.T (Time Delay 500mS) 415Vac		987.00
Dual function tripping coil		2,405.00
Auto - Discharge (Mechanism)		2,041.00
Castell Key Facility		284.00
Cylinder Key		340.00
Cylinder Key with Master Key		483.00
Breaker Fixing Bolts *		635.00
ON-OFF cycle counter		365.00
IP Cover IP 55		1,607.00
Vertical type Mec-Interlock For 2 units ACBs (rod type-pitch min. 550mm) *		1,971.00
Horizontal type Mec-Intelock For 2 units ACBs (wire type) *		2,434.00
Horizontal type Mec-Intelock For 3 units ACBs (wire type) *		4,529.00
Aux contact 7C		596.00
Aux contact 10C		715.00
Position Switches Type 2C *		701.00
Position Switches Type 4C *		1,386.00
Trip Indication Switch		170.00
Spring charge Indication Switch		510.00
Storage Drawout handle		284.00
Mal-insertion Prevention Device		510.00

Note: * Available on Drawout type only.

All accessories order separately will incur charges. (Charges will be waived if installation done at Terasaki factory)

ORDER TO:



Terasaki Electric (M) Sdn. Bhd.



Terasaki Electric Trading & Services(M) Sdn. Bhd.

TB - Series Miniature Circuit Breaker

MODEL	CURRENT RATING Calibrated at 45°C for marine application	BREAKING CAPACITY AC415V	POLE	CONNECTION	LIST PRICE (RM)
TB-5S	6A - 63A	6KA	1 POLE	FC	24.00
TB-5S		6KA	2 POLE	FC	69.00
TB-5S		6KA	3 POLE	FC	146.00
TB-5S		6KA	4 POLE	FC	250.00
TB-5P	10A - 63A	6KA	1 POLE	PM(line)/FC(load)	24.00
TB-5P		6KA	2 POLE	PM(line)/FC(load)	69.00
TB-5P		6KA	3 POLE	PM(line)/FC(load)	146.00
TB-10S	60A, 75A, 100A (80A)	6KA	1 POLE	FC	225.00
TB-10S		6KA	2 POLE	FC	320.00
TB-10S		6KA	3 POLE	FC	445.00
TB-10P	60A, 75A, 100A (80A)	6KA	1 POLE	PM(line)/FC(load)	225.00
TB-10P		6KA	2 POLE	PM(line)/FC(load)	320.00
TB-10P		6KA	3 POLE	PM(line)/FC(load)	445.00

Minimum order Quantity: 1 pole - 12 pcs per box
 2 pole - 6 pcs per box
 3 pole - 4 pcs per box

TECS - DIN Modular 6KA B Curve MCB

Terasaki Electric Trading & Services(M) Sdn. Bhd.

Terasaki Electric (M) Sdn. Bhd.

ORDER TO:

MODEL (Order code)	Current Rating	Breaking Capacity	Pole	Curve	BOX Quantity	LIST PRICE (RM)
EPB06061	6A	6KA	1P	B	12	20.00
EPB06101	10A	6KA	1P	B	12	20.00
EPB06161	16A	6KA	1P	B	12	20.00
EPB06201	20A	6KA	1P	B	12	20.00
EPB06251	25A	6KA	1P	B	12	20.00
EPB06321	32A	6KA	1P	B	12	20.00
EPB06401	40A	6KA	1P	B	12	20.00
EPB06501	50A	6KA	1P	B	12	45.00
EPB06631	63A	6KA	1P	B	12	45.00
EPB06062	6A	6KA	2P	B	6	57.00
EPB06102	10A	6KA	2P	B	6	57.00
EPB06162	16A	6KA	2P	B	6	57.00
EPB06202	20A	6KA	2P	B	6	57.00
EPB06252	25A	6KA	2P	B	6	57.00
EPB06322	32A	6KA	2P	B	6	57.00
EPB06402	40A	6KA	2P	B	6	57.00
EPB06502	50A	6KA	2P	B	6	83.00
EPB06632	63A	6KA	2P	B	6	83.00
EPB06063	6A	6KA	3P	B	4	86.00
EPB06103	10A	6KA	3P	B	4	86.00
EPB06163	16A	6KA	3P	B	4	86.00
EPB06203	20A	6KA	3P	B	4	86.00
EPB06253	25A	6KA	3P	B	4	86.00
EPB06323	32A	6KA	3P	B	4	86.00
EPB06403	40A	6KA	3P	B	4	86.00
EPB06503	50A	6KA	3P	B	4	185.00
EPB06633	63A	6KA	3P	B	4	185.00
EPB06064	6A	6KA	4P	B	3	180.00
EPB06104	10A	6KA	4P	B	3	180.00
EPB06164	16A	6KA	4P	B	3	180.00
EPB06204	20A	6KA	4P	B	3	180.00
EPB06254	25A	6KA	4P	B	3	180.00
EPB06324	32A	6KA	4P	B	3	180.00
EPB06404	40A	6KA	4P	B	3	180.00
EPB06504	50A	6KA	4P	B	3	203.00
EPB06634	63A	6KA	4P	B	3	203.00

Accessory : **Shunt trip 240Vac** Not Available / **Aux Sw 1C** Not Available / **Alarm Sw** Not Available

● 1P 6A to 40A must purchase in box quantity

TECS - DIN Modular 10KA B Curve MCB

MODEL (Order code)	Current Rating	Breaking Capacity	Pole	Curve	BOX Quantity	LIST PRICE (RM)
EPB10061	6A	10KA	1P	B	12	36.00
EPB10101	10A	10KA	1P	B	12	36.00
EPB10161	16A	10KA	1P	B	12	36.00
EPB10201	20A	10KA	1P	B	12	36.00
EPB10251	25A	10KA	1P	B	12	36.00
EPB10321	32A	10KA	1P	B	12	36.00
EPB10401	40A	10KA	1P	B	12	36.00
EPB10501	50A	10KA	1P	B	12	54.00
EPB10631	63A	10KA	1P	B	12	54.00
EPB10062	6A	10KA	2P	B	6	77.00
EPB10102	10A	10KA	2P	B	6	77.00
EPB10162	16A	10KA	2P	B	6	77.00
EPB10202	20A	10KA	2P	B	6	77.00
EPB10252	25A	10KA	2P	B	6	77.00
EPB10322	32A	10KA	2P	B	6	77.00
EPB10402	40A	10KA	2P	B	6	77.00
EPB10502	50A	10KA	2P	B	6	92.00
EPB10632	63A	10KA	2P	B	6	92.00
EPB10063	6A	10KA	3P	B	4	103.00
EPB10103	10A	10KA	3P	B	4	103.00
EPB10163	16A	10KA	3P	B	4	103.00
EPB10203	20A	10KA	3P	B	4	103.00
EPB10253	25A	10KA	3P	B	4	103.00
EPB10323	32A	10KA	3P	B	4	103.00
EPB10403	40A	10KA	3P	B	4	103.00
EPB10503	50A	10KA	3P	B	4	200.00
EPB10633	63A	10KA	3P	B	4	200.00
EPB10064	6A	10KA	4P	B	3	205.00
EPB10104	10A	10KA	4P	B	3	205.00
EPB10164	16A	10KA	4P	B	3	205.00
EPB10204	20A	10KA	4P	B	3	205.00
EPB10254	25A	10KA	4P	B	3	205.00
EPB10324	32A	10KA	4P	B	3	205.00
EPB10404	40A	10KA	4P	B	3	205.00
EPB10504	50A	10KA	4P	B	3	298.00
EPB10634	63A	10KA	4P	B	3	298.00

ORDER TO :

Terasaki Electric (M) Sdn. Bhd.

Terasaki Electric Trading & Services(M) Sdn. Bhd.

Accessory List Price : Shunt trip 240Vac : RM170.00 / Aux Sw 1C : RM160.00 / Alarm Sw : RM160.00

Note: Prices based on excluding GST effective From 1st March 2017 And Subject To Change Without Prior Notice.

TECS - DIN Modular 6KA C Curve MCB

Terasaki Electric Trading & Services(M) Sdn. Bhd.

Terasaki Electric (M) Sdn. Bhd.

ORDER TO:

MODEL (Order code)	Current Rating	Breaking Capacity	Pole	Curve	BOX Quantity	LIST PRICE (RM)
EPC06061	6A	6KA	1P	C	12	18.00
EPC06101	10A	6KA	1P	C	12	18.00
EPC06161	16A	6KA	1P	C	12	18.00
EPC06201	20A	6KA	1P	C	12	18.00
EPC06251	25A	6KA	1P	C	12	18.00
EPC06321	32A	6KA	1P	C	12	18.00
EPC06401	40A	6KA	1P	C	12	18.00
EPC06501	50A	6KA	1P	C	12	43.00
EPC06631	63A	6KA	1P	C	12	43.00
EPC06062	6A	6KA	2P	C	6	54.00
EPC06102	10A	6KA	2P	C	6	54.00
EPC06162	16A	6KA	2P	C	6	54.00
EPC06202	20A	6KA	2P	C	6	54.00
EPC06252	25A	6KA	2P	C	6	54.00
EPC06322	32A	6KA	2P	C	6	54.00
EPC06402	40A	6KA	2P	C	6	54.00
EPC06502	50A	6KA	2P	C	6	79.00
EPC06632	63A	6KA	2P	C	6	79.00
EPC06063	6A	6KA	3P	C	4	82.00
EPC06103	10A	6KA	3P	C	4	82.00
EPC06163	16A	6KA	3P	C	4	82.00
EPC06203	20A	6KA	3P	C	4	82.00
EPC06253	25A	6KA	3P	C	4	82.00
EPC06323	32A	6KA	3P	C	4	82.00
EPC06403	40A	6KA	3P	C	4	82.00
EPC06503	50A	6KA	3P	C	4	176.00
EPC06633	63A	6KA	3P	C	4	176.00
EPC06064	6A	6KA	4P	C	3	170.00
EPC06104	10A	6KA	4P	C	3	170.00
EPC06164	16A	6KA	4P	C	3	170.00
EPC06204	20A	6KA	4P	C	3	170.00
EPC06254	25A	6KA	4P	C	3	170.00
EPC06324	32A	6KA	4P	C	3	170.00
EPC06404	40A	6KA	4P	C	3	170.00
EPC06504	50A	6KA	4P	C	3	193.00
EPC06634	63A	6KA	4P	C	3	193.00

Accessory : **Shunt trip 240Vac** Not Available / **Aux Sw 1C** Not Available / **Alarm Sw** Not Available

● 1P 6A to 40A must purchase in box quantity

TECS - DIN Modular 10KA C Curve MCB

MODEL (Order code)	Current Rating	Breaking Capacity	Pole	Curve	BOX Quantity	LIST PRICE (RM)
EPC10061	6A	10KA	1P	C	12	35.00
EPC10101	10A	10KA	1P	C	12	35.00
EPC10161	16A	10KA	1P	C	12	35.00
EPC10201	20A	10KA	1P	C	12	35.00
EPC10251	25A	10KA	1P	C	12	35.00
EPC10321	32A	10KA	1P	C	12	35.00
EPC10401	40A	10KA	1P	C	12	35.00
EPC10501	50A	10KA	1P	C	12	52.00
EPC10631	63A	10KA	1P	C	12	52.00
EPC10062	6A	10KA	2P	C	6	74.00
EPC10102	10A	10KA	2P	C	6	74.00
EPC10162	16A	10KA	2P	C	6	74.00
EPC10202	20A	10KA	2P	C	6	74.00
EPC10252	25A	10KA	2P	C	6	74.00
EPC10322	32A	10KA	2P	C	6	74.00
EPC10402	40A	10KA	2P	C	6	74.00
EPC10502	50A	10KA	2P	C	6	88.00
EPC10632	63A	10KA	2P	C	6	88.00
EPC10063	6A	10KA	3P	C	4	98.00
EPC10103	10A	10KA	3P	C	4	98.00
EPC10163	16A	10KA	3P	C	4	98.00
EPC10203	20A	10KA	3P	C	4	98.00
EPC10253	25A	10KA	3P	C	4	98.00
EPC10323	32A	10KA	3P	C	4	98.00
EPC10403	40A	10KA	3P	C	4	98.00
EPC10503	50A	10KA	3P	C	4	190.00
EPC10633	63A	10KA	3P	C	4	190.00
EPC10064	6A	10KA	4P	C	3	195.00
EPC10104	10A	10KA	4P	C	3	195.00
EPC10164	16A	10KA	4P	C	3	195.00
EPC10204	20A	10KA	4P	C	3	195.00
EPC10254	25A	10KA	4P	C	3	195.00
EPC10324	32A	10KA	4P	C	3	195.00
EPC10404	40A	10KA	4P	C	3	195.00
EPC10504	50A	10KA	4P	C	3	284.00
EPC10634	63A	10KA	4P	C	3	284.00

ORDER TO :

Terasaki Electric (M) Sdn. Bhd.

Terasaki Electric Trading & Services(M) Sdn. Bhd.

Accessory List Price : Shunt trip 240Vac : RM170.00 / Aux Sw 1C : RM160.00 / Alarm Sw : RM160.00

Note: Prices based on excluding GST effective From 1st March 2017 And Subject To Change Without Prior Notice.

TECS - DIN Modular 6KA D Curve MCB

Terasaki Electric Trading & Services(M) Sdn. Bhd.

Terasaki Electric (M) Sdn. Bhd.

ORDER TO:

MODEL (Order code)	Current Rating	Breaking Capacity	Pole	Curve	BOX Quantity	LIST PRICE (RM)
EPD06061	6A	6KA	1P	D	12	20.00
EPD06101	10A	6KA	1P	D	12	20.00
EPD06161	16A	6KA	1P	D	12	20.00
EPD06201	20A	6KA	1P	D	12	20.00
EPD06251	25A	6KA	1P	D	12	20.00
EPD06321	32A	6KA	1P	D	12	20.00
EPD06401	40A	6KA	1P	D	12	20.00
EPD06501	50A	6KA	1P	D	12	48.00
EPD06631	63A	6KA	1P	D	12	48.00
EPD06062	6A	6KA	2P	D	6	59.00
EPD06102	10A	6KA	2P	D	6	59.00
EPD06162	16A	6KA	2P	D	6	59.00
EPD06202	20A	6KA	2P	D	6	59.00
EPD06252	25A	6KA	2P	D	6	59.00
EPD06322	32A	6KA	2P	D	6	59.00
EPD06402	40A	6KA	2P	D	6	59.00
EPD06502	50A	6KA	2P	D	6	86.00
EPD06632	63A	6KA	2P	D	6	86.00
EPD06063	6A	6KA	3P	D	4	90.00
EPD06103	10A	6KA	3P	D	4	90.00
EPD06163	16A	6KA	3P	D	4	90.00
EPD06203	20A	6KA	3P	D	4	90.00
EPD06253	25A	6KA	3P	D	4	90.00
EPD06323	32A	6KA	3P	D	4	90.00
EPD06403	40A	6KA	3P	D	4	90.00
EPD06503	50A	6KA	3P	D	4	194.00
EPD06633	63A	6KA	3P	D	4	194.00
EPD06064	6A	6KA	4P	D	3	188.00
EPD06104	10A	6KA	4P	D	3	188.00
EPD06164	16A	6KA	4P	D	3	188.00
EPD06204	20A	6KA	4P	D	3	188.00
EPD06254	25A	6KA	4P	D	3	188.00
EPD06324	32A	6KA	4P	D	3	188.00
EPD06404	40A	6KA	4P	D	3	188.00
EPD06504	50A	6KA	4P	D	3	212.00
EPD06634	63A	6KA	4P	D	3	212.00

Accessory : **Shunt trip 240Vac** Not Available / **Aux Sw 1C** Not Available / **Alarm Sw** Not Available

● 1P 6A to 40A must purchase in box quantity

TECS - DIN Modular 10KA D Curve MCB

MODEL (Order code)	Current Rating	Breaking Capacity	Pole	Curve	BOX Quantity	LIST PRICE (RM)
EPD10061	6A	10KA	1P	D	12	38.00
EPD10101	10A	10KA	1P	D	12	38.00
EPD10161	16A	10KA	1P	D	12	38.00
EPD10201	20A	10KA	1P	D	12	38.00
EPD10251	25A	10KA	1P	D	12	38.00
EPD10321	32A	10KA	1P	D	12	38.00
EPD10401	40A	10KA	1P	D	12	38.00
EPD10501	50A	10KA	1P	D	12	57.00
EPD10631	63A	10KA	1P	D	12	57.00
EPD10062	6A	10KA	2P	D	6	80.00
EPD10102	10A	10KA	2P	D	6	80.00
EPD10162	16A	10KA	2P	D	6	80.00
EPD10202	20A	10KA	2P	D	6	80.00
EPD10252	25A	10KA	2P	D	6	80.00
EPD10322	32A	10KA	2P	D	6	80.00
EPD10402	40A	10KA	2P	D	6	80.00
EPD10502	50A	10KA	2P	D	6	97.00
EPD10632	63A	10KA	2P	D	6	97.00
EPD10063	6A	10KA	3P	D	4	108.00
EPD10103	10A	10KA	3P	D	4	108.00
EPD10163	16A	10KA	3P	D	4	108.00
EPD10203	20A	10KA	3P	D	4	108.00
EPD10253	25A	10KA	3P	D	4	108.00
EPD10323	32A	10KA	3P	D	4	108.00
EPD10403	40A	10KA	3P	D	4	108.00
EPD10503	50A	10KA	3P	D	4	209.00
EPD10633	63A	10KA	3P	D	4	209.00
EPD10064	6A	10KA	4P	D	3	215.00
EPD10104	10A	10KA	4P	D	3	215.00
EPD10164	16A	10KA	4P	D	3	215.00
EPD10204	20A	10KA	4P	D	3	215.00
EPD10254	25A	10KA	4P	D	3	215.00
EPD10324	32A	10KA	4P	D	3	215.00
EPD10404	40A	10KA	4P	D	3	215.00
EPD10504	50A	10KA	4P	D	3	312.00
EPD10634	63A	10KA	4P	D	3	312.00

ORDER TO:

Terasaki Electric (M) Sdn. Bhd.

Terasaki Electric Trading & Services(M) Sdn. Bhd.

Accessory List Price : Shunt trip 240Vac : RM170.00 / Aux Sw 1C : RM160.00 / Alarm Sw : RM160.00

Note: Prices based on excluding GST effective From 1st March 2017 And Subject To Change Without Prior Notice.

TECS

DIN Modular 10KA (80A,100A,125A) B,C,D Curve MCB



Terasaki Electric Trading & Services(M) Sdn. Bhd.



Terasaki Electric (M) Sdn. Bhd.



ORDER TO:

MODEL (Order code)	Current Rating	Breaking Capacity	Pole	Curve	BOX Quantity	LIST PRICE (RM)
EPB10801	80A	10KA	1P	B	12	155.00
EPB101001	100A	10KA	1P	B	12	163.00
EPB101251	125A	10KA	1P	B	12	174.00
EPB10802	80A	10KA	2P	B	6	302.00
EPB101002	100A	10KA	2P	B	6	310.00
EPB101252	125A	10KA	2P	B	6	317.00
EPB10803	80A	10KA	3P	B	4	465.00
EPB101003	100A	10KA	3P	B	4	472.00
EPB101253	125A	10KA	3P	B	4	479.00
EPB10804	80A	10KA	4P	B	3	655.00
EPB101004	100A	10KA	4P	B	3	663.00
EPB101254	125A	10KA	4P	B	3	670.00
EPC10801	80A	10KA	1P	C	12	148.00
EPC101001	100A	10KA	1P	C	12	154.00
EPC101251	125A	10KA	1P	C	12	166.00
EPC10802	80A	10KA	2P	C	6	289.00
EPC101002	100A	10KA	2P	C	6	295.00
EPC101252	125A	10KA	2P	C	6	302.00
EPC10803	80A	10KA	3P	C	4	443.00
EPC101003	100A	10KA	3P	C	4	449.00
EPC101253	125A	10KA	3P	C	4	457.00
EPC10804	80A	10KA	4P	C	3	624.00
EPC101004	100A	10KA	4P	C	3	631.00
EPC101254	125A	10KA	4P	C	3	637.00
EPD10801	80A	10KA	1P	D	12	163.00
EPD101001	100A	10KA	1P	D	12	170.00
EPD101251	125A	10KA	1P	D	12	183.00
EPD10802	80A	10KA	2P	D	6	317.00
EPD101002	100A	10KA	2P	D	6	325.00
EPD101252	125A	10KA	2P	D	6	332.00
EPD10803	80A	10KA	3P	D	4	487.00
EPD101003	100A	10KA	3P	D	4	495.00
EPD101253	125A	10KA	3P	D	4	502.00
EPD10804	80A	10KA	4P	D	3	687.00
EPD101004	100A	10KA	4P	D	3	694.00
EPD101254	125A	10KA	4P	D	3	701.00

Accessory List Price : Shunt trip 240Vac : RM170.00 / Aux Sw 1C : RM160.00 / Alarm Sw : RM160.00

TECS - 2 Pole Residual Current Circuit Breaker



MODEL (Order code)	Current Rating	Sensitivity	Residual current characteristics	Pole	LIST PRICE (RM)
EPR2016010AC	16A	10mA	AC	2 POLE	223.00
EPR2020010AC	20A	10mA	AC	2 POLE	233.00
EPR2025010AC	25A	10mA	AC	2 POLE	233.00
EPR2016030AC	16A	30mA	AC	2 POLE	216.00
EPR2025030AC	25A	30mA	AC	2 POLE	216.00
EPR2032030AC	32A	30mA	AC	2 POLE	195.00
EPR2040030AC	40A	30mA	AC	2 POLE	195.00
EPR2063030AC	63A	30mA	AC	2 POLE	235.00
EPR2080030AC	80A	30mA	AC	2 POLE	318.00
EPR2100030AC	100A	30mA	AC	2 POLE	430.00
EPR2016100AC	16A	100mA	AC	2 POLE	193.00
EPR2025100AC	25A	100mA	AC	2 POLE	193.00
EPR2032100AC	32A	100mA	AC	2 POLE	126.00
EPR2040100AC	40A	100mA	AC	2 POLE	126.00
EPR2063100AC	63A	100mA	AC	2 POLE	168.00
EPR2080100AC	80A	100mA	AC	2 POLE	287.00
EPR2100100AC	100A	100mA	AC	2 POLE	357.00
EPR2016300AC	16A	300mA	AC	2 POLE	213.00
EPR2025300AC	25A	300mA	AC	2 POLE	213.00
EPR2032300AC	32A	300mA	AC	2 POLE	193.00
EPR2040300AC	40A	300mA	AC	2 POLE	193.00
EPR2063300AC	63A	300mA	AC	2 POLE	224.00
EPR2080300AC	80A	300mA	AC	2 POLE	268.00
EPR2100300AC	100A	300mA	AC	2 POLE	320.00

ORDER TO:

Terasaki Electric (M) Sdn. Bhd.

Terasaki Electric Trading & Services(M) Sdn. Bhd.

Accessory : Shunt trip 240Vac Not Available / Aux Sw 1C Not Available / Alarm Sw Not Available

TECS - 4 Pole Residual Current Circuit Breaker

MODEL (Order code)	Current Rating	Sensitivity	Residual current characteristics	Pole	LIST PRICE (RM)
EPR4016010AC	16A	10mA	AC	4 POLE	256.00
EPR4020010AC	20A	10mA	AC	4 POLE	270.00
EPR4025010AC	25A	10mA	AC	4 POLE	270.00
EPR4016030AC	16A	30mA	AC	4 POLE	348.00
EPR4025030AC	25A	30mA	AC	4 POLE	348.00
EPR4032030AC	32A	30mA	AC	4 POLE	318.00
EPR4040030AC	40A	30mA	AC	4 POLE	318.00
EPR4063030AC	63A	30mA	AC	4 POLE	418.00
EPR4080030AC	80A	30mA	AC	4 POLE	502.00
EPR4100030AC	100A	30mA	AC	4 POLE	551.00
EPR4016100AC	16A	100mA	AC	4 POLE	338.00
EPR4025100AC	25A	100mA	AC	4 POLE	338.00
EPR4032100AC	32A	100mA	AC	4 POLE	281.00
EPR4040100AC	40A	100mA	AC	4 POLE	281.00
EPR4063100AC	63A	100mA	AC	4 POLE	354.00
EPR4080100AC	80A	100mA	AC	4 POLE	445.00
EPR4100100AC	100A	100mA	AC	4 POLE	553.00
EPR4016300AC	16A	300mA	AC	4 POLE	270.00
EPR4025300AC	25A	300mA	AC	4 POLE	270.00
EPR4032300AC	32A	300mA	AC	4 POLE	225.00
EPR4040300AC	40A	300mA	AC	4 POLE	225.00
EPR4063300AC	63A	300mA	AC	4 POLE	262.00
EPR4080300AC	80A	300mA	AC	4 POLE	385.00
EPR4100300AC	100A	300mA	AC	4 POLE	483.00

Accessory : **Shunt trip 240Vac** Not Available / **Aux Sw 1C** Not Available / **Alarm Sw** Not Available

ORDER TO :



Terasaki Electric (M) Sdn. Bhd.



Terasaki Electric Trading & Services(M) Sdn. Bhd.

TECS EP series - RCBO
1P + N (2 Module)



Terasaki Electric Trading & Services(M) Sdn. Bhd.



Terasaki Electric (M) Sdn. Bhd.



ORDER TO:

Current Rating	Breaking Capacity	Sensitivity	Curve	Residual current characteristics	LIST PRICE (RM)
6A	6KA	30mA	C	AC	443.00
10A	6KA	30mA	C	AC	443.00
16A	6KA	30mA	C	AC	443.00
20A	6KA	30mA	C	AC	443.00
25A	6KA	30mA	C	AC	443.00
32A	6KA	30mA	C	AC	443.00
40A	6KA	30mA	C	AC	443.00
6A	6KA	100mA	C	AC	430.00
10A	6KA	100mA	C	AC	430.00
16A	6KA	100mA	C	AC	430.00
20A	6KA	100mA	C	AC	430.00
25A	6KA	100mA	C	AC	430.00
32A	6KA	100mA	C	AC	430.00
40A	6KA	100mA	C	AC	430.00
6A	6KA	300mA	C	AC	409.00
10A	6KA	300mA	C	AC	409.00
16A	6KA	300mA	C	AC	409.00
20A	6KA	300mA	C	AC	409.00
25A	6KA	300mA	C	AC	409.00
32A	6KA	300mA	C	AC	409.00
40A	6KA	300mA	C	AC	409.00

Accessory : **Shunt trip 240Vac** Not Available / **Aux Sw 1C** Not Available / **Alarm Sw** Not Available

TECS - DIN MODULAR ISOLATOR SWITCH

MODEL (Order code)	Current Rating	Pole	BOX Quantity	LIST PRICE (RM)
EPI0251	25A	1P	12	17.00
EPI0321	32A	1P	12	17.00
EPI0401	40A	1P	12	17.00
EPI0631	63A	1P	12	35.00
EPI0801	80A	1P	12	68.00
EPI1001	100A	1P	12	80.00
EPI1251	125A	1P	12	POR
EPI0252	25A	2P	6	43.00
EPI0322	32A	2P	6	43.00
EPI0402	40A	2P	6	43.00
EPI0632	63A	2P	6	64.00
EPI0802	80A	2P	6	91.00
EPI1002	100A	2P	6	103.00
EPI1252	125A	2P	6	POR
EPI0253	25A	3P	4	66.00
EPI0323	32A	3P	4	66.00
EPI0403	40A	3P	4	66.00
EPI0633	63A	3P	4	113.00
EPI0803	80A	3P	4	160.00
EPI1003	100A	3P	4	170.00
EPI1253	125A	3P	4	POR
EPI0254	25A	4P	3	91.00
EPI0324	32A	4P	3	91.00
EPI0404	40A	4P	3	91.00
EPI0634	63A	4P	3	154.00
EPI0804	80A	4P	3	193.00
EPI1004	100A	4P	3	205.00
EPI1254	125A	4P	3	POR

ORDER TO :

Terasaki Electric (M) Sdn. Bhd.

Terasaki Electric Trading & Services(M) Sdn. Bhd.

● Delivery: Indent basis (4 - 6 weeks upon order confirmation)

POR: Price On Request

RTR POWER CAPACITORS - 440Vac

MODEL (Order code)	VOLTAGE (V)	FREQUENCY (Hz)	POWER (KVAR)	DIAMETER (mm)	HEIGHT (mm)	TERMINALS	LIST PRICE (RM) PER KVAR
C440 - 0255 - TER	440	50	2.5	70	215	2.5 mm2	POR
C440 - 0505 - TER	440	50	5	70	215	2.5 mm2	POR
C440 - 0755 - TER	440	50	7.5	85	215	6 mm2	POR
D440 - 1005 - DW	440	50	10	70	215	6 mm2	POR
D440 - 1255 - DW	440	50	12.5	85	215	10 mm2	POR
D440 - 1505 - DW	440	50	15	85	215	10 mm2	POR
D440 - 2005 - DW	440	50	20	100	215	10 mm2	POR
D440 - 2505 - DW	440	50	25	120	215	25 mm2	POR
D440 - 3005 - DW	440	50	30	120	215	25 mm2	POR
D440 - 4005 - DW	440	50	40	136	215	50 mm2	POR
C440 - 5005 - TER	440	50	50	136	300	50 mm2	POR

POR: Price On Request

Specification:

3 Phase Cylindrical capacitor

The Capacitors are DRY Type and Delivered with Discharge Resistors

RTR Energia offers one the largest Power Factor capacitor range

LV Three Phase capacitor Cylinder types. 0,5 Kvar - 50 Kvar. 240v - 690v

Worldwide with such designed - Patent Pending New DW Three Phase Capacitor (First Capacitor)

DC High Voltage Capacitors different power electronic application

One of the largest Three Phase LV manufacturing capacity worldwide.

Standard accordingly to = IEC 60831

UL Approved range for Three Phase capacitors. (USA)

Leader in Spanish APFC System market

RTR POWER CAPACITORS - 525Vac

MODEL (Order code)	VOLTAGE (V)	FREQUENCY (Hz)	POWER (KVAR)	DIAMETER (mm)	HEIGHT (mm)	TERMINALS	LIST PRICE (RM) PER KVAR
D525 - 1005 - DW	525	50	10	85	215	4 mm2	POR
D525 - 1250 - DW	525	50	12.5	85	215	6 mm2	POR
D525 - 1505 - DW	525	50	15	100	215	6 mm2	POR
D525 - 2005 - DW	525	50	20	120	215	10 mm2	POR
D525 - 2505 - DW	525	50	25	120	215	16 mm2	POR
D525 - 3005 - DW	525	50	30	136	215	16 mm2	POR
D525 - 3505 - DW	525	50	35	136	215	25 mm2	POR
D525 - 5005 - TER	525	50	50	136	300	50 mm2	POR

Specification:

POR: Price On Request

3 Phase Cylindrical capacitor

The Capacitors are DRY Type and Delivered with Discharge Resistors

RTR Energia offers one the largest Power Factor capacitor range

LV Three Phase capacitor Cylinder types. 0,5 Kvar - 50 Kvar. 240v - 690v

Worldwide with such designed - Patent Pending New DW Three Phase Capacitor (First Capacitor)

DC High Voltage Capacitors different power electronic application

One of the largest Three Phase LV manufacturing capacity worldwide.

Standard accordingly to = IEC 60831

UL Approved range for Three Phase capacitors. (USA)

Leader in Spanish APFC System market

ORDER TO :



Terasaki Electric (M) Sdn. Bhd.



Terasaki Electric Trading & Services(M) Sdn. Bhd.

DETUNED REACTOR



Terasaki Electric Trading & Services(M) Sdn. Bhd.

Terasaki Electric (M) Sdn. Bhd.

ORDER TO:

525V Capacitor - Filter 415V -7%- 189Hz Copper					
525V / kVAR	Filter / kVAR	Load Ampere	Inductance mH	Capacitor μ F	List Price (RM)
5	3.35	4.7	12.32	3x19.19	POR
7.5	5.03	7	8.2	3x28.82	POR
10	6.71	9.3	6.15	3x38.44	POR
12.5	8.39	11.7	4.92	3x48.07	POR
15	10.06	14	4.1	3x57.64	POR
20	13.42	18.7	3.07	3x76.89	POR
25	16.79	23.4	2.46	3x96.2	POR
30	20.13	28	2.05	3x115.33	POR
40	26.85	37.4	1.54	3x153.84	POR
50	33.55	46.7	1.23	3x192.22	POR
75	50.33	70	0.82	3x288.37	POR
100	67.2	93.5	0.61	3x385.02	POR

525V Capacitor - Filter 415V -7%- 189Hz Aluminium					
525V / kVAR	Filter / kVAR	Load Ampere	Inductance mH	Capacitor μ F	List Price (RM)
5	3.35	4.7	12.32	3x19.19	POR
7.5	5.03	7	8.2	3x28.82	POR
10	6.71	9.3	6.15	3x38.44	POR
12.5	8.39	11.7	4.92	3x48.07	POR
15	10.06	14	4.1	3x57.64	POR
20	13.42	18.7	3.07	3x76.89	POR
25	16.79	23.4	2.46	3x96.2	POR
30	20.13	28	2.05	3x115.33	POR
40	26.85	37.4	1.54	3x153.84	POR
50	33.55	46.7	1.23	3x192.22	POR
75	50.33	70	0.82	3x288.37	POR
100	67.2	93.5	0.61	3x385.02	POR

POR: Price On Request

Three Phase Harmonic Filters	
Three Phase Harmonic Filters are made of low losses magnetic plates and copper winding.	
Compliances Standard	: IEC-60289, IEC - 076
Tolerance 'L'	: 3%
Permissible Overload	: 1.07 In
Linearcity Inductance	: 1.501 In
Heat Insulation	: Class H (180 Deg. Celcius)
Thermal Protection	: 120 Deg. Celcius
Room Temperature	: 45 Deg. Celcius
Prof. Stress	: 3 KV
Protection Degree	: IP - 00

Note: Prices based on excluding GST effective From 1st March 2017 And Subject To Change Without Prior Notice.

TZS - Earth Leakage Relay (TZS AD ELR)

APPLICABLE MODEL	DIAMETER OF C.T.	SENSIVITY	LIST PRICE (RM)
TZS-24 ZCT c/w TZS AD AC240V ELR	24MM	30-100-300-500-1000mA	695.00
TZS-40 ZCT c/w TZS AD AC240V ELR	40MM	30-100-300-500-1000mA	927.00
TZS-68 ZCT c/w TZS AD AC240V ELR	68MM	30-100-300-500-1000mA	1,272.00
TZS-100 ZCT c/w TZS AD AC240V ELR	100MM	30-100-300-500-1000mA	1,801.00
TZS AD AC240V ELR	-	30-100-300-500-1000mA	545.00

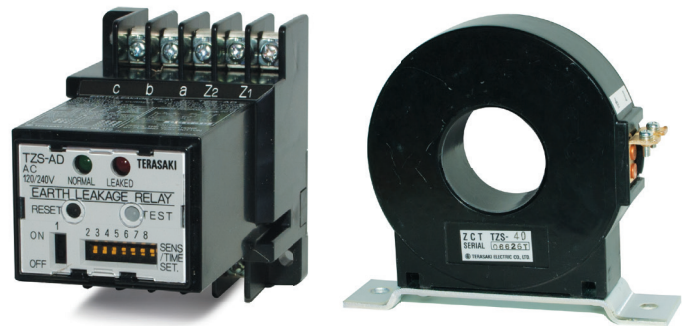
ORDER TO:

Terasaki Electric (M) Sdn. Bhd.

Terasaki Electric Trading & Services(M) Sdn. Bhd.

DESCRIPTION	LIST PRICE (RM)
Flash mounting bracket (Panel mounted)	80.00

Rated operating time (sec) : Below 0.04 / 0.3 / 0.5 / 1 / 2



GENERAL TERMS AND CONDITIONS OF SALE

INTERPRETATION

For the purposes of these terms and conditions of sales the following terms shall have the meaning ascribed to them by this Clause except where this would be inconsistent with the context in which they occur.

Company means TERASAKI ELECTRIC (M) SDN BHD. and TERASAKI ELECTRIC TRADING & SERVICES (M) SDN BHD. incorporated under the Companies Acts and having a place of business at Lot 3, Jalan 16/13D, 40000 Shah Alam, Selangor, Darul Ehsan, Malaysia. and No.20 & 22, Jalan Rajawali 2, Bandar Puchong Jaya, Jalan Puchong, 47100 Selangor Darul Ehsan, Malaysia respectively.

Purchaser means any individual or individuals or incorporated or unincorporated body ordering or purchasing Goods and/or Services (as hereinafter defined) from the Company.

Goods mean the articles and Services means the services which are ordered and/or purchased by the purchaser from the Company.

Contract means a contract made between the Company and the Purchaser for the supply of Goods and/or Services to the Purchaser.

Terms and Conditions means terms and conditions for the sale of Goods and Services as specified in this document and as adjusted from time to time.

GENERAL

The terms and conditions shall apply to every Contract unless the Company agrees otherwise in writing.

CONDITIONS OF CONTRACT

Where a Contract is concluded, in the event of any conflict between the Terms and Conditions and the terms of any offer made by a Purchaser to purchase Goods and/or Services the Terms and Conditions shall override and prevail over the terms of any such offer.

VALIDITY

Any tender submitted by the Company is an invitation to transact business and not an order. The placing of an order by the Purchaser whether in accordance with the terms of a tender or otherwise constitutes an offer by the Purchaser and a contract shall only be concluded if such an offer is accepted in writing by the Company.

PRICE & GST

All prices quoted are subject to the addition of GST when chargeable at the rate prevailing at the appropriate tax point. The Company reserves the right to make an extra charge for packing cases where these are required for non-catalogue items although this will be returnable where appropriate. Confirmation of price is necessary at time of order. The Company reserves the right to adjust prices quoted in its price list without notice.

OBLIGATIONS OF PURCHASER

Any order must be accompanied by sufficient information to enable the Company (if it accepts the same) to proceed with the order forthwith. If any delay in manufacture or delivery should take place due or partly due to the Purchasers failure to provide such information or otherwise due to any sort of delay or change on the part of the Purchaser the Company shall in addition to its other rights in respect therefore be at liberty to make an additional charge in respect of increased cost. Any sample supplied by the company will be on a sale or return invoice. If sample goods are not returned within a maximum of three months the company's original invoice will be valid and due for payment.

DELIVERY TIME

The times estimated for despatch are to be treated as estimates only and will date from the Company's acceptance of the Purchasers offer or if later the date when all necessary information is available to enable the Company to process the order. The Company shall use its best endeavours to despatch by the date estimated but will have no responsibility for failure. It shall be a reasonable cause for the delay in despatch of the order if the Company shall suffer from or be affected by strikes, cause for the delay in despatch of the order if the Company shall suffer from or be affected by strikes, lock outs or anything beyond the control of the Company.

LOSS OR DAMAGE IN TRANSIT

The company does not accept any responsibility for damage shortage or loss in transit unless (a) the Company and the carriers are notified in writing of such damage shortages or loss within such time as will enable the Company to comply with the carriers conditions of carriage as affecting damage shortage of loss in transit and (b) when the goods have not arrived the Company and carriers are notified within 5 working days of the date of despatch. Where delivery is made by the Company's transport the company must be notified in writing of any damage shortage or loss within 3 working days of receipt of the goods. Subject to the above conditions being met the Company will repair free of charge goods lost or damaged in transit.

WARRANTY

The Company accepts responsibility for the repair or replacement of any Goods which are defective where such defects arise solely or mainly from faulty materials and/or workmanship provided that the Purchaser complies with the following namely: (a) that written notification giving full particulars of such defects are received by the Company within 1 month of such defect becoming apparent and in any Note: Prices based on excluding GST effective From 1st March 2017 And

event within 1 year of delivery to the Purchaser (b) any goods which the purchaser may claim to reject shall be returned to the Company within 10 working days after such notification for inspection by the Company and repair or replacement as the Company reasonably deems necessary. For the purpose of such clause (a) and (b) hereof time shall be deemed to be off the essence.

This guarantee is given in place of all, warranties, conditions, statements and liabilities whatsoever implied by common law statute, trade usage or otherwise all of which shall accordingly be excluded. Furthermore the Company and its servants and agents shall not be liable for any injury or loss or damage whatsoever whether direct, consequential or special and howsoever caused resulting from or arising out of or incidental to (a) the Company's performance or failure to conform to any obligations under any contract or (b) any defect in the goods or (c) any advice or services supplied by the Company or on its behalf in relation to the assembly, installation or use of goods.

TERMS OF PAYMENT

Unless otherwise agreed in writing payment in full shall be due within 90 days of the date of the invoice. Invoices are raised on dispatch of goods. Interest will be payable from the due date of payment at a rate of 2% per month or part thereof on any part of the purchase price remaining unpaid after due date.

CANCELLATION OF ORDERS

No cancellation of order for all items, once a purchase is confirmed either in writing or by an official Purchase Order. In unavoidable circumstances, (1) Cancellation charge of 6% of the total purchase price will be imposed once invoice have been made, (2) Goods return charge of 30% of the total purchase price will be imposed once invoice have been made and goods been delivered.

DISPUTES AND SET-OFF

The Purchaser shall make payment to the Company under each and every Contract in accordance with the terms and conditions and shall not exercise or seek to exercise any right or claim to withhold payment or any right of compensation or set-off in respect of any alleged breach of any contract by the Company.

PASSING OF PROPERTY

The risk in the Goods shall pass to the Purchaser on delivery and the Purchaser is recommended to take out insurance cover.

RETENTION OF TITLE

Until full and final payment has been received by the Company under every Contract ownership of all Goods shall remain with the Company and:

Where full and final payment has not been made as aforesaid and any goods are disposed of by the Purchaser other than in good faith and for value ownership in all such goods shall remain with the Company.

Where any goods are sold at a fair and reasonable price by the Purchaser or are lost or destroyed by the purchaser and payment has not been made aforesaid the Purchaser shall be deemed to be hold any monies received from such sale or as a result of such destruction on behalf of and as an agent of the Company and shall remit such sums to the Company on demand as required.

Where goods have been incorporated in other items by way of the fitting or manufacturing process but remain readily identifiable and shall allow the Company to repossess same at any time without prior notice being given.

STORAGE

The purchaser shall be bound to store all goods belonging to the Company in terms hereof in such a way as to be readily identifiable and shall allow the Company to repossess same at any time without prior notice being given.

PURCHASERS WARRANTY

The purchaser shall hold the Company harmless against any loss, damage or expenses resulting from an infringement of patents or trademark arising from compliance by the Company with the Purchasers design specifications or instructions.

WAIVER

The rights of the Company in terms hereof shall not be affected by any waiver or forbearance the part of the Company.

HEALTH & SAFETY

It is essential that the goods supplied by the Company are used and installed in accordance with the specifications of the Company and in compliance with the recognised standards of the Electrical Industry and that installation and maintenance be carried out by suitably trained and qualified operatives and the Purchaser accepts responsibility for compliance with these conditions.

HEADING

The headings contained herein are for information and do not form part of these conditions.

DATA PROTECTION ACT

The Company will make a search with a credit reference agency, which will keep a record of that search and will share that information with other business. It may also make enquiries about the principal directors with a credit reference agency.

Subject To Change Without Prior Notice.

TemBreak2 - JKR Approved Model (J-MAL)

MODEL	Current Rating (A) Calibrated at 40°C	Breaking Capacity at 415Vac (Icu/ Ics) KA
E160SF	15A, 20A, 30A, 40A, 50A, 60A, 75A, 100A, 125A	16KA / 8KA
S160SCF	15A, 20A, 30A, 40A, 50A, 60A, 75A, 100A, 125A, 160A	25KA / 13KA
S160SF	15A, 20A, 30A, 40A, 50A, 60A, 75A, 100A, 125A, 160A	40KA / 20KA
E250SF	100A, 125A, 150A, 175A, 200A, 225A, 250A	25KA / 19KA
E250SJ	100A, 125A, 150A, 175A, 200A, 225A, 250A	25KA / 19KA
S125RF	15A, 20A, 30A, 40A, 50A, 60A, 75A, 100A, 125A	65KA / 65KA
S125RJ	20A, 32A, 50A, 63A, 100A, 125A	65KA / 65KA
S225RF	125A, 150A, 175A, 200A, 225A	65KA / 65KA
S250RJ	160A, 250A	65KA / 65KA
S400CF	250A, 300A, 350A, 400A	36KA / 36KA
S400NF	250A, 300A, 350A, 400A	50KA / 50KA
S400GF	250A, 300A, 350A, 400A	70KA / 50KA
S800NF	500A, 600A, 630A, 700A, 800A	50KA / 50KA

Note :- Model Name End With :- F :- Fixed thermal type J :- Adjustable thermal Type

TemPower2 - JKR Approved Model (J-MAL)

MODEL	Current Rating (A) Calibrated at 40°C	Breaking Capacity at 415Vac (Icu/ Ics) KA
AR208S	800A	65KA / 65KA
AR212S	1250A	65KA / 65KA
AR216S	1600A	65KA / 65KA
AR220S	2000A	65KA / 65KA
AR325S	2500A	85KA / 85KA
AR332S	3200A	85KA / 85KA



TERASAKI ELECTRIC (M) SDN.BHD (156365-X)

Head Office :-

Lot 3, Jalan Jemuju Empat 16/13D,
40000 Shah Alam,
Selangor Darul Ehsan,
Malaysia
T: +603 5549 3820
F: +603 5512 9299

Johor Branch :-

Lot 37-01, Jalan Titiwangsa 2,
Taman Tampoi Indah,
81200 Johor,
Malaysia
T: +6019 7236 828
F: +607 2411 892

Penang Sales Office :-

T: +6019 4462 346
F: +604 5070 346



TERASAKI ELECTRIC TRADING & SERVICES (M) SDN.BHD (1135136-T)

No. 20 & 22, Jalan Rajawali 2,
Bandar Puchong Jaya, Jalan Puchong,
47100 Selangor Darul Ehsan,
Malaysia
T: +603 8070 2486
F: +603 8070 2481



2017
MARCH
PRICE LIST